



Advantage

Bagless Cyclonic Backpack Vacuum Cleaner

INSTRUCTION MANUAL AND PARTS GUIDE

CAUTION: Read the instruction manual before using the machine



Model No.: 15721000T & 15721000M



Rugged Industries Pty Ltd

ABN: 59154866878

12 / 51 Owen Street

Glendenning NSW 2761 Australia

Postal: PO Box 1076 Dundas NSW 2117

Ph: +61 2 9680 0052

Email: contactus@ruggedindustries.com.au

www: ruggedindustries.com.au

Safety Instructions

Read this manual before using the back pack and always follow the Safety and Maintenance Instructions

CAUTION: Store this vacuum cleaner indoors only

- **This machine is for domestic and light commercial indoor use only**
- Do not leave the appliance when plugged in. Unplug from the power point when not in use and before servicing.
- For domestic use:
 - The appliance is not intended for use by persons (including children) with reduced physical, sensory or mental capabilities, or lack of experience and knowledge, unless they have been given supervision or instruction concerning use of the appliance by a person responsible for their safety
- For commercial use:
 - The appliance is not intended for use by persons (including children) with reduced physical, sensory or mental capabilities, or lack of experience and knowledge
- Children should be supervised to ensure that they do not play with the appliance.
- Use only as described in this manual. If appliance is not working as it should, has been dropped, damaged, left outdoors, or dropped into water, return it to a service centre.
- Extension Cord **MUST** be secured in the smart cord restraint on the side of the vacuum cleaner
- Do not pull or carry by cord or plug, use cord as a handle, close a door on cord, or pull cord around sharp edges or corners. Do not run appliance over cord. Keep cord away from heated surfaces.
- If the cord is damaged, it must be replaced by the manufacturer or its service agent or a similarly qualified person in order to avoid a hazard.
- Do not unplug by pulling on cord. To unplug, grasp the plug, not the cord.
- Do not handle plug or appliance with wet hands.
- Do not put any object into openings. Do not use with any opening blocked.
- Keep hair, loose clothing, fingers and all parts of body away from openings and moving parts.
- Turn off all controls before unplugging.
- Do not use to pick up flammable or combustible liquids, such as petrol, or use in areas where they may be present.

WARNINGS

- Do not vacuum anything that is burning or smoking such as cigarettes, matches or hot ashes
- Do not use the machine in areas where flammable or combustible liquids, vapors or gas are present.
- Do not vacuum wet surfaces, damp areas or suck up water Do not use machine if water has been picked up by the vacuum system without an electrical inspection by a qualified person
- Do not operate near explosive materials such as
- solvents, thinners, fuels or grain dust.
- Do not vacuum hard, sharp, abrasive objects such as glass, gravel and metal objects
- Do not vacuum large amounts of powders, chalk dust, or powder spills these can be vacuumed in small amounts as contained in carpet.
- Do not vacuum plastic bags or large paper objects that block the Mesh Filter
- Do not use with Tank Assembly detached from Motor Housing Assembly, or without filters in place
- Do not fill above the “Max” level marked on the Bin Wall **DO NOT OVER FILL**
- Do not operate with fluff build up on Mesh Filter, remove fluff with Duster to avoid airflow loss used for cyclonic filtration.
- Do not operate with a blockage. Stop the vacuum clear the blockage and clean / replace the filter
- Do not transport the vacuum without first emptying. Transport only in an upright position.

SAVE THESE INSTRUCTIONS

Packaging

- Advantage backpack vacuum cleaner models comes with the following accessories:

Part No.	Description	Advantage Turbo	Advantage Megapro	Advantage Hako	
16707000	Hose BEP Tank Fitting	1	1	1	
	16007003 Hose Bent End Piece	1	1	1	
	16007005 Hose Connector 75A	1	1	1	
16019002	Tool Crevice Slotted 32mm	1	1	1	
16019003	Tool Swivel Dusting Brush 32mm	1	1	1	
16019004	Tool EZ2GO 32mm	1			
16019005	Tool Turbo Brush 32mm	1			
16019016	Tool Hard Floor Tool 36cm 32mm	1	1		
16019007	Tool Upholstery 32mm	1	1	1	
16019008	Tool Caddy 3 x 32mm	1	1	1	
16019014	Tool Mega Gulper Pro 385 Wide 32mm		1	1	
16022005	Rods Stainless Steel 32mm x 495mm L	2	2	2	
16005005	Filter Advantage H10	10	10	5	
16002018	Carabiner D shape 58mm	1	1	1	
16003000	Duster Microfibre 385mm	1	1	1	

Assembly

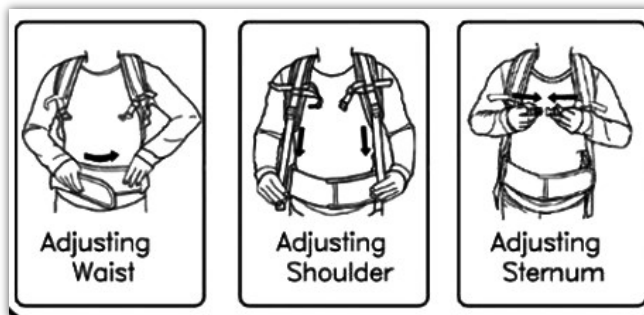
- The vacuum cleaner is supplied for right-handed operators. You can change to left-handed configuration by turning the tank assembly 180°. Release the Tank Lock at the top of the machine to change configuration or to remove the tank.
- Attach hose end into the tank inlet bayonet turn anticlockwise to secure bayonet fitting.
- Connect both rods together to create one length.
- Connect rod with Tool Caddy to the Bent End Piece attached to the hose end
- Attach EZ2GO floor tool to the opposite end of rod.



Start Up

- Unwind power supply cord and leave uncoiled on floor.
- Plug the cord into an electrical socket and switch power ON at the power point.

Adjusting



Wearing



Controls

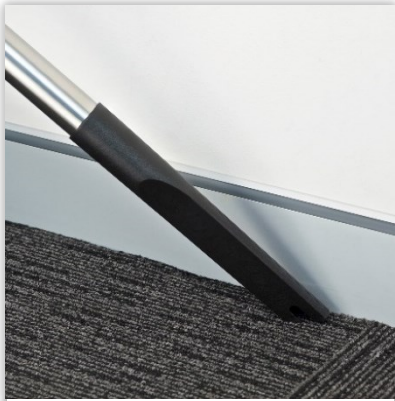
- The power switch is located at the left-hand side at waist level.
- The vacuum cleaner is fitted with an over temperature safety thermostat to prevent over heating in case of blockage or clogged filter. In the event of nuisance shut down, remove the blockage immediately and clean the filter regularly. In the event of shut down, turn the Power Switch OFF at the machine and wait approximately 15 minutes for the thermostat to reset.
- The slide regulator on the bent end piece (BEP) controls the airflow at the nozzle. Opening the slide regulator diverts some air flow from the nozzle to the BEP regulator.

Adjust the regulator to an open position to reduce suction/airflow when vacuuming loose coverings e.g., curtains, light mats or loose rugs.

Adjust the regulator to the closed position for full suction/airflow e.g., when using a Turbo brush or floor tools.



Applications



1. The Crevice Tool is used for crevice, corner, upholstery or spot cleaning.



2. With the swivel neck Dusting Brush, you can vacuum deep into corners, and by rotating the neck, vacuum flat surfaces.



3. The upholstery tool is used for vacuuming upholstery, narrow gaps and carpeted steps.



4. The Tool Caddy fits to the rod and allow you to conveniently carry 3 32mm tools at arm's reach.



5. The EZ2GO tool is used on both hard and carpeted floors. It can vacuum bulky materials, and reach under low recesses



6. The 36cm Mega Pro tool is used on both hard and carpeted floors. The extra width provides 30% more productivity than a standard low profile floor tool.



7. The 36cm Hard Floor tool is used on hard and timber floors. The floor tool bristles aid in removing dust on irregular surfaces and along grout lines on tiled surfaces when vacuuming.



8. The Turbo Brush aids in the removal of hair and dust deep in the carpet pile using agitation from a brush roller driven by vacuum air.

On Board Convenience



1. Smart cord restraint eliminates cord strain, and provides easy access for cord replacement

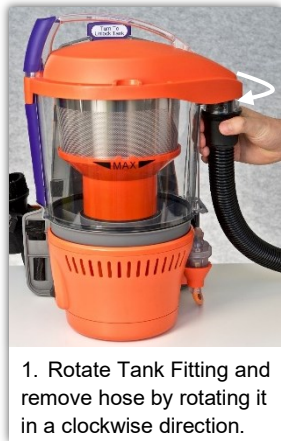


2. Unclip the microfibre duster from the carabiner to clean the bin and return after use



3. Carry your favourite tools on the Waist Pad

Emptying and Cleaning the Bin



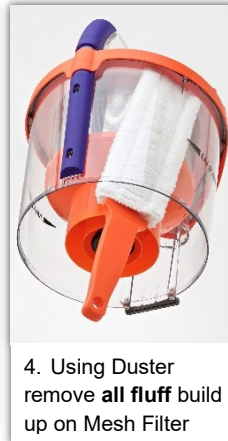
1. Rotate Tank Fitting and remove hose by rotating it in a clockwise direction.



2. Rotate Tank Lock and remove tank.



3. Press button to empty tank.



4. Using Duster remove **all fluff** build up on Mesh Filter



5. Wack **all dust** from outer bin until clean, wipe all dust off the bin seals.

Changing and Cleaning the Motor Filter



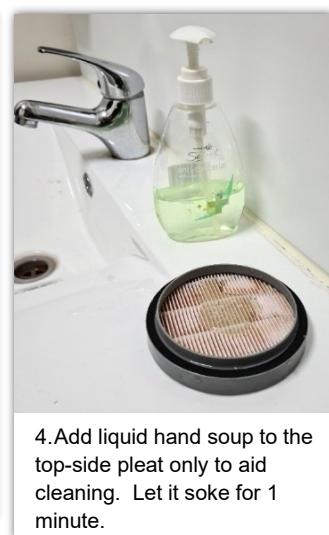
1. The Motor Filter is located below the Bin. Turn Filter Cap clockwise to remove.



2. Tap out loose dust from Motor Filter.



3. Rinse filter in luke warm water, until rinse, water is clear.



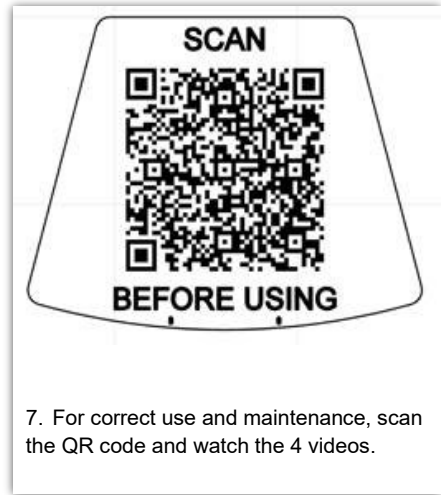
4. Add liquid hand soap to the top-side pleat only to aid cleaning. Let it soak for 1 minute.



5. Rinse filter until there are **no soap bubbles** in the filter pleats or rinse water.



6. Leave the filter to dry for up to 5 days. The filter should pass light when clean.



7. For correct use and maintenance, scan the QR code and watch the 4 videos.

Storage and Carrying



1. Loop the extension cord and drape over the frame



2. To tidy the waist pad connect it to the front of the vacuum cleaner



3. Carry the vacuum cleaner by the handle after emptying the bin

Trouble Shooting Guide

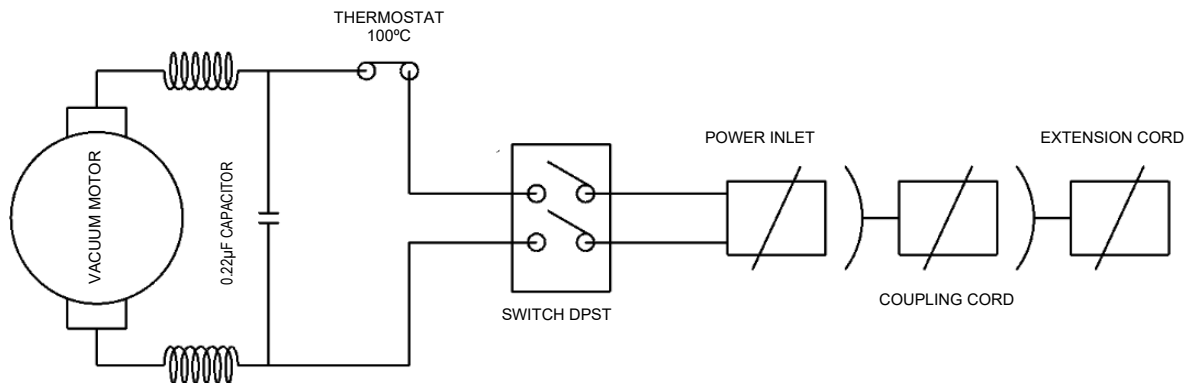
Problem	Possible Cause	Solution
Machine does not operate	<ul style="list-style-type: none"> • Not plugged into power point • No power at the power point • Machine switch or power switch OFF • Damaged Cord or Coupling Cord • Faulty Switch or Motor 	<ul style="list-style-type: none"> • Plug into Power socket • Move to a functional power point. • Turn switch ON • Replace Cord • Contact Service Centre
Loss of Suction	<ul style="list-style-type: none"> • Blockage • Suction Regulator open • Bin Full • Motor Filter Blocked • Mesh Filter Blocked • Bin Seal pulled out • Poppet Valve loose 	<ul style="list-style-type: none"> • Check for blockage and clear • Close Suction Regulator • Empty Bin • Clean Filter • Clean Filter • Replace Seal • Tighten Poppet Valve

Product Specifications

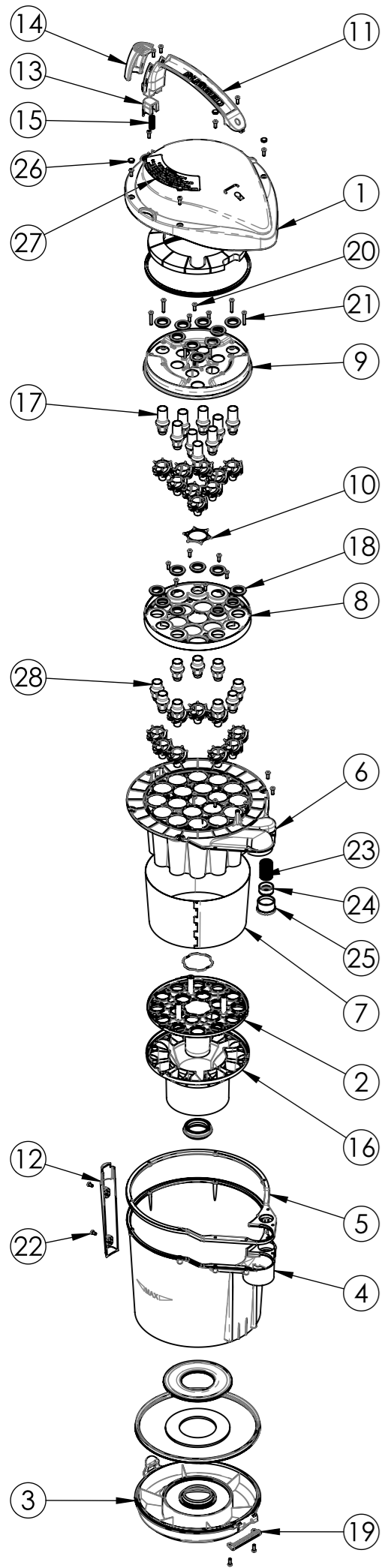
General	
Packaging	Size: 36 x 36 x 50 cm Weight: 10.3 kg
Vacuum	Type: Dry Capacity: 5 Litre Hose Length: 1.2m Rods: 2 x 500mm Stainless Steel Accessories Dia: 32mm Weight: 4.9 kg - not including cord and rods Class: Type 2 Double Insulated Rated: 1200W Approval: RCM Noise: 72 dBA at 1.5m Air Flow at Nozzle: 30l/s Suction: 25 kPa
Filtration	
Primary	Size: 5 Litre Type: Multi-cyclone Overall Efficiency: 99.94 ± 0.2%
Motor Filter	Type: 108mm Dia x 21mm High, Pleated / Rinseable Class: H10 HEPA
Electrical	
Power Supply	220 - 240V.a.c., 50 – 60 Hz
Current	5.2A at 240V
Electrical Cord	18 m, 10 A, 3 core ordinary duty
Thermal Protection	100°C auto-reset thermostat
Motor	
Vacuum Motor	Type: Single stage Thru-Flo Brand: Domel Model 463.3.409-15 Rated: 1450w, Dimensions: Fan Case Dia 120mm Overall Height 114mm Output Performance: Air flow 56.5 l/s, Suction 29.8kPa, Air Watts 641 Carbon Brush Life: 800h
Warranty	1 year

Note: Advantage vacuum cleaner design incorporates,
Australian Patent No.: 2015904843,
Registered Design App. No.: 201612860
Innovative Patent No.: 201601477
Trade Mark.: EZ2GO™ No. 1787984

Wiring Diagram

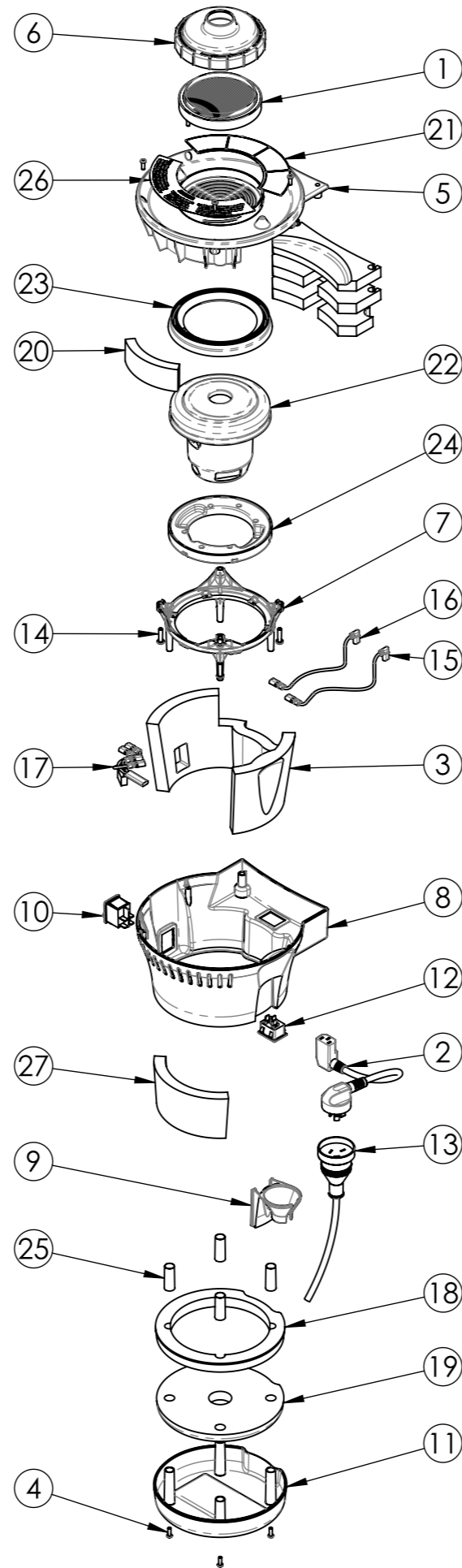


Parts Diagram



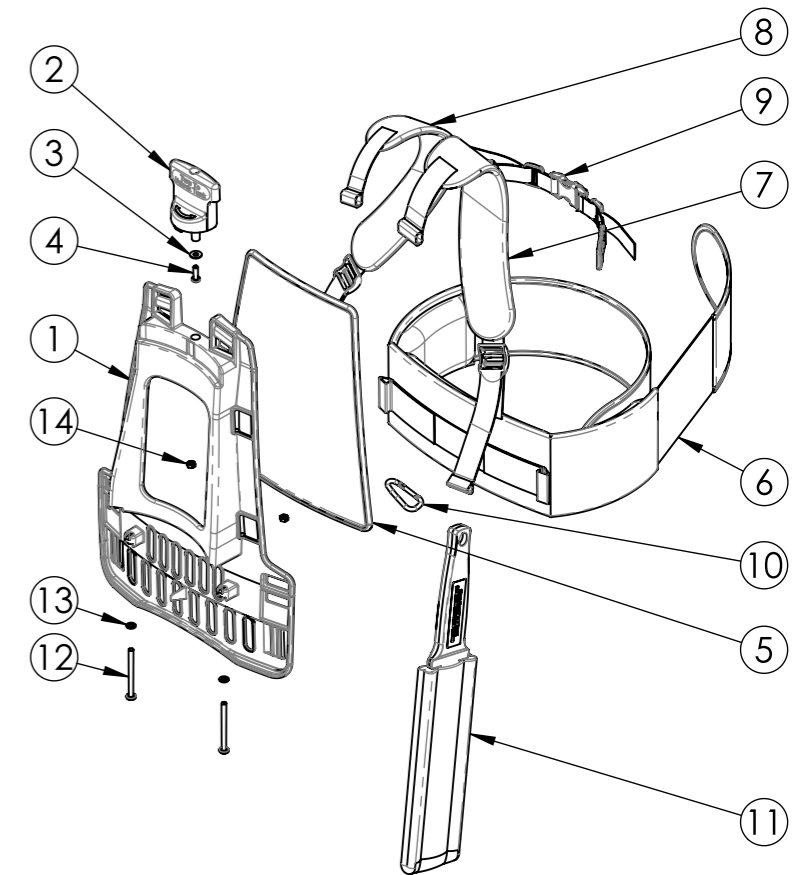
ITEM NO.	PART NUMBER	QTY.
1	16702000 Cover Top & Seal Assy	1
	16002000 Cover Top	1
	16018015 Seal Top Cover	1
	16008003 Insulation Cover Set	1
2	16701003 Bin Inner Assy	1
	16001003 Bin Inner	1
	16014002 O Ring Bin Inner	1
	16006001 Gasket Filter	1
3	16711001 Lid Bin Assy	1
	16011001 Lid Bin	1
	16018002 Seal Tank	1
	16018003 Seal Bin	1
	16008004 Insulation Bin Seal	1
4	16018000 Shell Tank	1
5	16018011 Seal Swirl Tubes	1
6	16018001 Swirl Tubes	1
7	16005000 Filter Mesh	1
8	16012000 Manifold Inlet	1
9	16012001 Manifold Outlet	1
10	16018013 Seal Manifold	1
11	16007000 Handle	1
12	16011000 Lever Bin Release	1
13	16017000 Retainer Button Spring	1
14	16001005 Button Bin Release	1
15	16018010 Spring Bin Release	1
16	16001004 Bin Outer	1
17	16719001 Tube Outlet Swirl Blade Assy	9
	16019001 Tube Outlet Swirl Blade	1
	16001000 Swirl Blade Moulding	1
18	16006000 Grommet Blade	18
19	16007001 Hinge Tank	1
20	13780002 Screw WN1412 KB40 x 12 Z	26
21	16018006 Screw WN1412 KB40 x 25 Z	6
22	16018005 Screw WN1412 KB40 x 8 ZBC	2
23	16018009 Spring Poppet Valve	1
24	16021000 Valve Poppet	1
25	16021001 Valve Poppet Inlet	1
26	16002008 Cap Screw	4
27	16011006 Label Access	1
28	16719000 Tube Inlet Swirl Blade Assy	9
	16019000 Tube Inlet Swirl Blade	1
	16001000 Swirl Blade Moulding	1

15719000 TANK ADVANTAGE ASSEMBLY



ITEM NO.	PART NUMBER	QTY.
1	16005005 Pleated Filter Advantage	1
2	16002003 Cord Coupling	1
3	16008001 Insulation Back and Side Set 4Pc	1
	16008001 Insulation Back Rear Infill #1	1
	16008001 Insulation Back Rear Infill #2	1
	16008001 Insulation Back Rear Infill #3	1
	16008001 Insulation Side Wall #4	1
4	16018004 Screw WN1412 KB40 x 12 Z	8
5	16015001 Plate Motor Mounting	1
6	16002001 Cover Filter	1
7	16002031 Clamp Motor 463 series	1
8	16007002 Housing Motor	1
9	16002006 Cord Restraint	1
10	13780014 Switch Rocker 2HP	1
11	16002002 Cap Motor	1
12	13780007 Socket Inlet C14	1
13	16002004 Cord Extension	1
14	13380048 Screw WN1412 KB50 x 20 Z	4
15	16022002 Wire 180L Blue 10A	1
16	16022001 Wire 160L Brown 10A	1
17	16722001 Wire Capacitor Thermostat Assy	1
	16022006 Wire Neutral 160L Advantage	1
	13830058 Receptacle Pre-insulated QC 6.3	2
	16019013 Receptacle Blue QC 4.8mm	2
	16019009 Thermostat Advantage 100C	1
	13806135 Capacitor 0.22uF Case 18 x 14 x 8.2	1
18	16008000B Insulation Base Top Part	1
19	16008000A Insulation Base Bottom Part	1
20	16008003 Insulation Cover Set (Insulation Cover E)	1
21	16011003 Filter Label	1
22	16012007 Motor Domel Stg 1 TF 1450W	1
23	16006006 Gasket Motor Domel Top	1
24	16006007 Gasket Motor Domel Bottom	1
25	16019012 Tube Heat Shrink	4
26	16011005 Label Thermostat	1
27	16005001 Filter Exhaust	1

15707000 HOUSING MOTOR ADVANTAGE ASSEMBLY



ITEM NO.	PART NUMBER	QTY.
1	16005004 Frame	1
2	16011002 Lever Lock	1
3	16022007 Washer M8 16.7OD x 8.5IDx	1
4	13780003 Screw WN1412 KB50 x 16Z PT	1
5	16015002 Pad Back Advantage Blk	1
6	16015004 Pad Waist Advantage	1
7	16015003 Pad Shoulder L & R 4 Pc Set Advantage (Right)	1
8	16015003 Pad Shoulder L & R 4 Pc Set Advantage (Left)	1
9	16018025 Sternum Strap with Adjuster and Buckle 0-03	1
10	16002018 Carabiner D50mm	1
11	16003000 Duster Microfibre	1
12	16018016 Screw M5 x 60L x 0.8 PH Z	2
13	16022004 Washer M5 x 0.8 Thick	2
14	16013001 Nut M5 x 8AF x 4 Thick	2

16705004 FRAME ADVANTAGE ASSEMBLY

General Warranty Policy

Vacuum cleaners manufactured by Rugged Industries Pty Ltd are to the highest quality standards. We encourage you to care for your product and follow the instructions in this manual, and in turn, you will benefit from a product that provides performance and long life.

The following statement is a requirement under Australian Consumer Law and applies to consumer sales of goods and services. In this statement “Our” means Rugged Industries and “you” means original purchaser.

“Our goods come with guarantees that cannot be excluded under the Australian Consumer Law. You are entitled to a replacement or refund for a major failure and compensation for any other reasonably foreseeable loss or damage. You are also entitled to have the goods repaired or replaced if the goods fail to be of acceptable quality and the failure does not amount to a major failure”

In addition to guarantees under Australian Consumer Law, Rugged Industries warrants the Advantage vacuum cleaner and model variants against faulty material and/or workmanship for one year, from the date of purchase by the consumer, when operated and maintained following the instructions in this Manual.

The following explains the conditions and what to do in the event of a claim:

Rugged Industries or an authorized Service Agent or person will replace parts determined as faulty, but this does not apply to normal consumable, worn, and rotating parts that require replacement under normal use, including but not limited to rubber parts, filters, hoses, power cords, floor tools, dusting brush, crevice tools, upholstery tool, tool caddy, turbine brush, etc.

If a difficulty develops with this equipment, you should contact the dealer from whom it was originally purchased.

Warranty does not cover any machine or component that has been altered, abused, neglected, modified, or used with non-genuine Rugged Industry resulting in, property damage, or loss of income due to malfunction of the Equipment.

Warranty does not cover damage by transportation, freight, delivery, product return, accident, misapplication, improper service or maintenance, blockages, vacuuming water or bulk powder, moist carpet, use, or other instructions not in this instruction Manual.

All repairs and servicing during the warranty period must be carried out by Rugged Industries Pty Ltd or an authorized Rugged Industries Service Agent or person. Rugged Industries Pty Ltd or an authorized Service Agent who may request you to complete a Warranty Claim / Stock Return Form or other similar form before returning any goods. All reasonable expenses associated with any transportation in returning goods for a warranty claim are the consumer's responsibility, and in all instances, the product is transported at the owner's risk.

Rugged Industries will not be responsible for the cost of repairs or damages caused by unauthorized persons.

Warranty claims must be made within the warranty period and proof of purchase must be supplied with the claim.

This warranty applies only to the original purchaser. Rugged is not responsible for costs or repairs performed by persons other than those specifically authorized by Rugged Industries Pty Ltd

To the extent permitted by law, all other warranties whether implied or otherwise, not set out in these warranty, terms and conditions are excluded and Rugged is not liable in contract, tort (including, without limitation, negligence or breach of statutory duty) or otherwise to compensate you for:

- Any increased costs or expenses;
- Any loss of profit, revenue, business, contracts or anticipated savings;
- Any loss or expense resulting from a claim by a third party; or
- Any special indirect or consequential loss or damage of any nature whatsoever caused by Rugged's failure in complying with its obligations

The benefits given to you in this warranty are in addition to other rights and remedies under a law in relation to the equipment or services to which this warranty applies.

REFUNDS

Please choose your purchase carefully as a refund may not be provided if you simply change your mind. Repairs, refunds, or exchanges will not be accepted or provided unless the goods are faulty.

Products purchased cannot be returned without prior written confirmation from Rugged Industries Pty Ltd
We endeavour to process all refunds within 7 business days of approval.

CHANGE OF MIND

If you simply change your mind, and the product(s) are unopened and still in their original packaging, you may return them to our warehouse within 30 days of purchase at your own cost less a 10% restocking fee. You must call Rugged Industries Pty Ltd before returning orders for instructions on how to do this.

RETURNS

If,

- A product is damaged or faulty through no fault of your own and you can provide evidence of the damage/fault;
- Incorrect goods were supplied.

Rugged Industries Pty Ltd will, upon return of the product, offer you a refund, repair, or exchange following the Competition and Consumer Act 2010 within a reasonable time if you can provide a receipt or other satisfactory proof of purchase

CUSTOMER REQUESTED RETURNS

Please consider carefully your request for product return for performance loss. Service fees and freight charges will apply if in the sole assessment of our service department, product performance loss is contributable to inadequate maintenance, lack of filter replacement, product negligence, misuse, or inappropriate application.

If in the assessment of our service department part failure is not contributable to inadequate maintenance, lack of filter replacement, product negligence, misuse, or inappropriate application, and the vacuum cleaner is returned cleaned, parts, labor, and return freight will be provided free of charge. Cleaning fees apply for vacuums returned in a dirty condition.

WARRANTY REGISTRATION DETAILS

Purchaser: _____ Purchase Date: _____

Address: _____

State: _____ Post Code: _____ Contact: _____ Ph: _____

Model No: _____ Serial No: _____

Purchased From: _____

Address: _____